

Microsoft Power BI – CentraForce Dashboards & Embedded Solutions

CentraForce – Health



CentraForce Health delivers actionable, data-driven insights by applying proprietary micro-analytics and algorithms that have been developed and tested by extensive usage.

The key purpose of analytics and visualization is for users to have insights on various health facilities around their locations. Users could choose from several dashboards about medical facilities and list down the locations, which they can utilize.

USER BEHAVIOR ANALYSIS AND USER MODELING FOR WEB AND MOBILE APPS:

This project with Power BI by Microsoft was an app for Customers / Users to avail themselves of health care facilities according to various categories listed by the dashboards. The visual reports that combined information from various embedded data sources with which we could make required decisions in terms of additional features, user experience (UX) as well as user interface (UI), and general marketing efforts for effective

MS Power BI can help health-care providers to compare the financial performance, based on patient population.

THIS INTERACTIVE DASHBOARD HAS THE FOLLOWING KEY DEPICTIONS:

- Lists and Subheadings: Health Care Risks and categorized percentages on subheadings
- Total Covered Charges, Total Payments, Total Medicare Payments, and Total Discharges
- Tree Chart – Total Payments by Provider Name
- Map – Total Payments by Provider State and Provider City
- Stacked bar chart – Average Payments by Provider
- List – Risk and percentage definition.
- Dropdowns – User choose from the filters
- Stacked Bar Chart – Total revenue by Claim Policy
- Line and Clustered Column Chart – Monthly Profit and Gross Loss by Claim Policy
- Tree Map – Percentage of Health Risk Types



KEY FEATURES UTILIZED IN MS POWER BI:

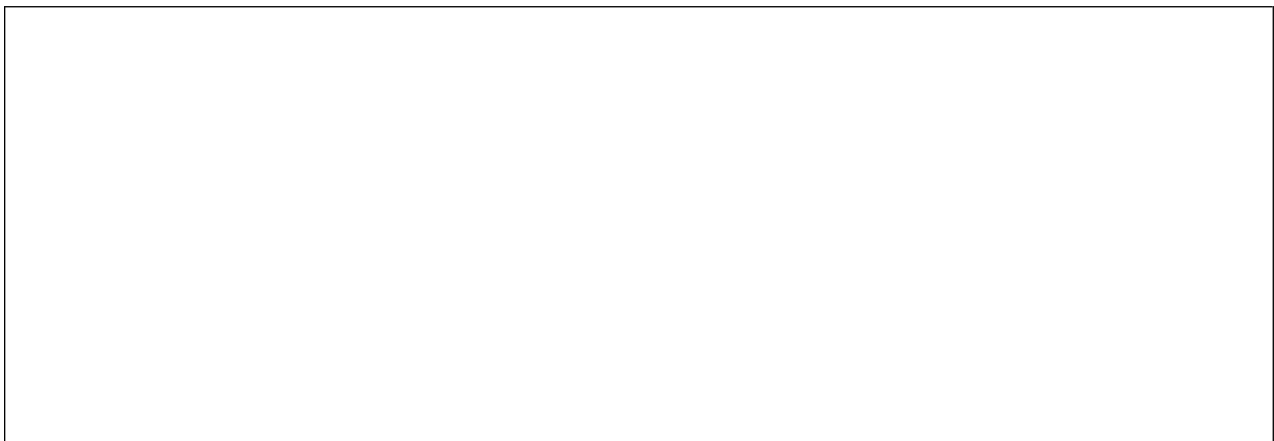
- **Direct query** - connect to data sources without importing and caching that data in the data model.
- **Power Pivot, Power Queries & DAX functions**
- **Custom visual development**
- **Streaming datasets** –programmatically stream data to a Power BI dashboard, so that we can see data change in real time.
- **Application embedding** – allows us to embed Power BI visuals, reports and dashboards into a custom web application as part of the custom solution.



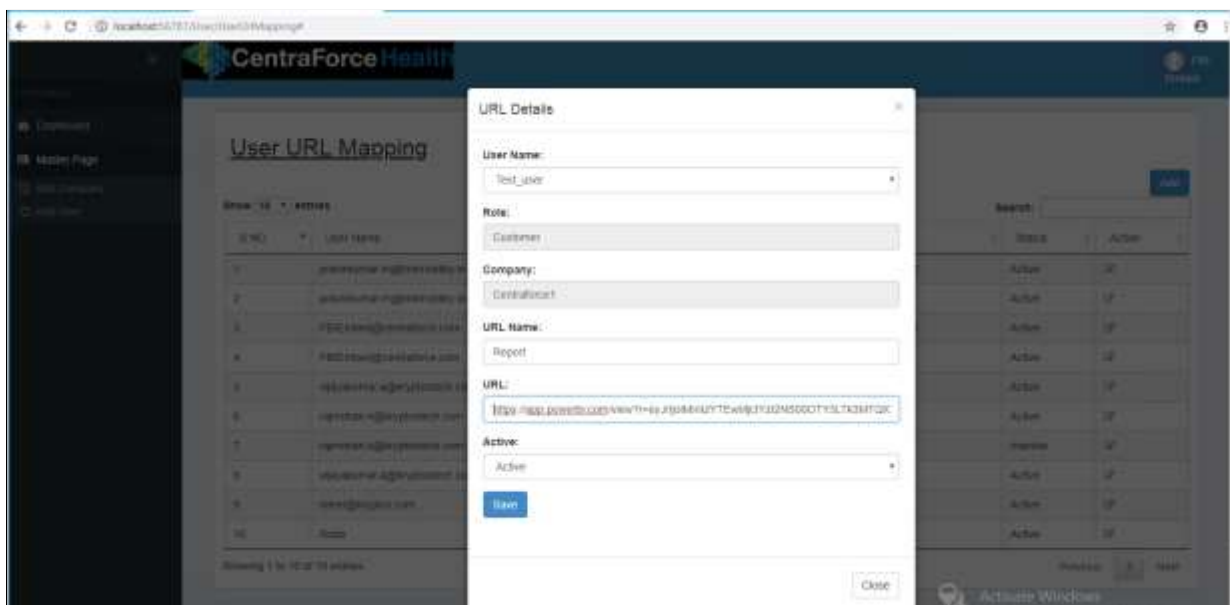
EXTERNAL WEB SOLUTION FOR USER EMBEDDED SYSTEM USING AZURE PAAS PLATFORM (AAD SSO):

External Users are provided with an embedded link to their respective Dashboards and reporting visuals with which the client could provide access to external partners through Azure Active Directory Single Sign On (AAD SSO). This secures data leakage and integrity within the internal and external users of CentraForce.

The following snapshots show the user/partner management by the external web solutions provided by CentraForce using MS Power BI.



Embedding MS Power BI link for External Web Solution for CentraForce Customer/Partner/User:



CentraForce Health

User URL Mapping

Show 10 entries

S ID	User Name	Company Name	URL Name
1	pporden@centraforce.com	Centraforce	Population
2	rvillama@centraforce.com	Centraforce	
3	jlozman@centraforce.com	Centraforce	
4	prohman@centraforce.com		
5	jpete@centraforce.com		
6	jroby@centraforce.com		
7	epeterson@centraforce.com		
8			

CentraForce Health is dedicated to helping clients improve the quality of care of their patients and members, as well as improving the business performance of their organizations. We are patient and health plan member-centric with privacy being the foundation of everything we do.

At this point, CentraForce included Power BI for Office 365 to give custom-reporting abilities to all the constant information created by the different frameworks, furnishing users with maps, visualizations, and dashboards indicating data, for example, Health care types, geographic areas, and consumption. This data empowers users to identify the environment and show them to maximize their healthcare usage.